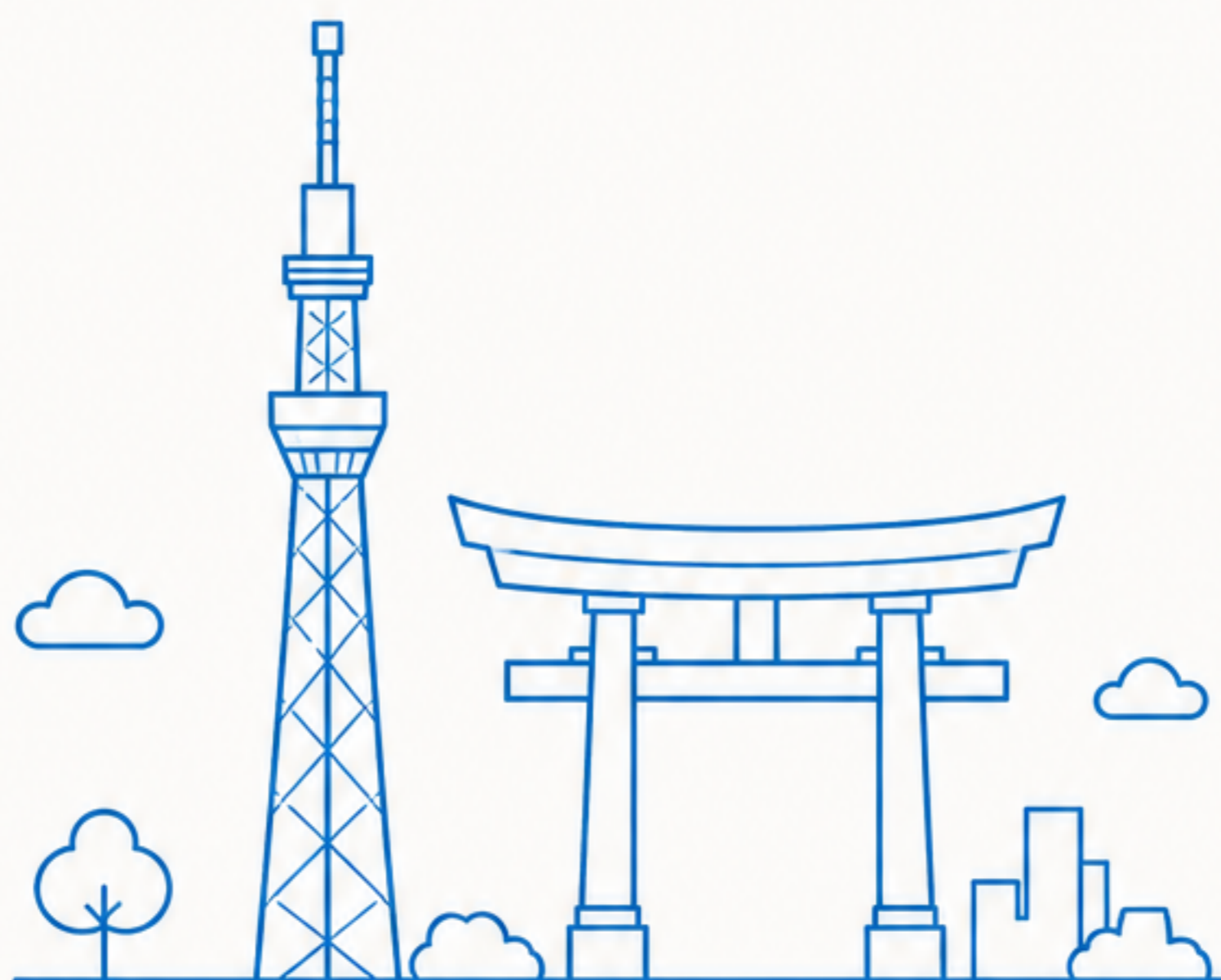




# TOKYO

## 1-Day First-Timer Travel Plan ・ 2026



- ① Day route
- ② Asakusa
- ③ Tokyo Skytree
- ④ Akihabara
- ⑤ Shibuya



Plan by Playable Japan ・ [playablejapan.com](https://playablejapan.com)



# TOKYO

playablejapan.com

## 1-Day First-Timer Plan • 2026



### YOUR DAY

09:00

#### MORNING

### Sensō-ji (Asakusa)

Kaminarimon gate & Nakamise street • free



11:00

#### LATE MORNING

### Tokyo Skytree

city & Mt. Fuji views • book a timed ticket



14:00

#### AFTERNOON

### Akihabara

arcades, figures & retro games



17:30

#### EVENING

### Shibuya Crossing & Shibuya Sky

the famous scramble at sunset



#### GET AROUND

- Suica / ICOCA IC card
- Tokyo Subway Ticket (24/48/72h)
- Narita → Keisei Skyliner (~41 min)



#### BOOK AHEAD

- ★ **Essential (sell out):** teamLab Planets, Harry Potter Tour
- ✔ **Recommended:** Tokyo Skytree, Shibuya Sky
- **Free, just turn up:** Sensō-ji, Meiji Jingu, Shibuya



#### BUDGET

**¥6,000–12,000 / day**  
(about \$40–80) per person



#### DON'T GET LOST (station exits)

- 📍 **Shibuya Crossing** → Shibuya Stn, Hachiko Exit
- 📍 **Akihabara** → Akihabara Stn, Electric Town Exit
- 📍 **teamLab Planets** → Shin-Toyosu Stn (Yurikamome line), 1-min walk
- 📍 **Meiji Jingu** → Harajuku Stn, west side





## 2

## ASAKUSA ・ 浅草



## WHAT TO DO



Kaminarimon (giant red lantern gate)



Nakamise shopping street



Sensō-ji main hall

(free; 6:00–17:00, from 6:30 Oct–Mar)



Hozomon gate &amp; five-story pagoda



Asakusa Shrine

**Optional:** rickshaw ride, kimono rental,  
Sumida River walk.

## EAT NEARBY (ASAKUSA SPECIALTIES)

ningyo-yaki cakes • melonpan • tempura • monjayaki •  
kibi-dango • kaminari-okoshi rice crackers • grilled unagi.

## GETTING TO THE NEXT STOP

To Tokyo Skytree — Tobu Skytree Line,  
Asakusa Stn → Tokyo Skytree Stn,  
1 stop (~3 min), or a ~20-min walk  
across the Sumida River.

## TIP

**Go early** — Nakamise gets crowded by late morning.  
(Check Google Maps for live train times.)



# 3 TOKYO SKYTREE

## ・ 東京スカイツリー



### WHAT TO DO



**Tembo Deck** (350m, from ¥1,800 adult)



optional **Tembo Galleria** (450m, extra fee)



**glass floor**



**views of the city and Mt. Fuji**  
on clear days.



**Tokyo Solamachi** (300+ shops & restaurants)



**Sumida Aquarium**



**the Postal Museum**



**Hours** ~10:00–22:00 (Sat–Sun from 9:00).



### BOOK AHEAD

timed tickets; buying online is cheaper than the counter (counter adds ~¥500).



### EAT NEARBY

Solamachi food floors — ramen, sushi, sweets and Skytree-themed treats; view restaurants on 30–31F.



### GETTING TO THE NEXT STOP

To Akihabara — from Oshiage / Tokyo Skytree Stn, about 15–20 min with one change (check a route app for the best connection).





# 4 AKIHABARA ・ 秋葉原



## WHAT TO DO



### Arcades

(GiGO, Taito Station, namco, Round1 — free entry, from ¥100/play, open to ~23:30)



### figure & anime shops

(Radio Kaikan, Mandarake, amiami)



### retro game shops

(Super Potato, BEEP)



### gachapon halls



### maid cafes

(entry + drink, ~¥1,500–3,500)



Most shops 11:00–20:00.



Tax-free with passport (¥5,000+).



## EAT NEARBY

Akihabara curry (a local specialty) ・ ramen ・ conveyor-belt sushi ・ themed & maid cafes.



## GETTING TO THE NEXT STOP

To Shibuya — JR Yamanote Line direct from Akihabara, ~30 min. Use the **Electric Town Exit**.





# 5 SHIBUYA ・ 渋谷



## WHAT TO DO



**Shibuya Scramble Crossing**  
(the world's busiest)



**Hachiko statue**



**Shibuya Sky open-air observation deck**  
(229m, ¥2,000, reservation-based — sunset is prime)



**Center-gai**



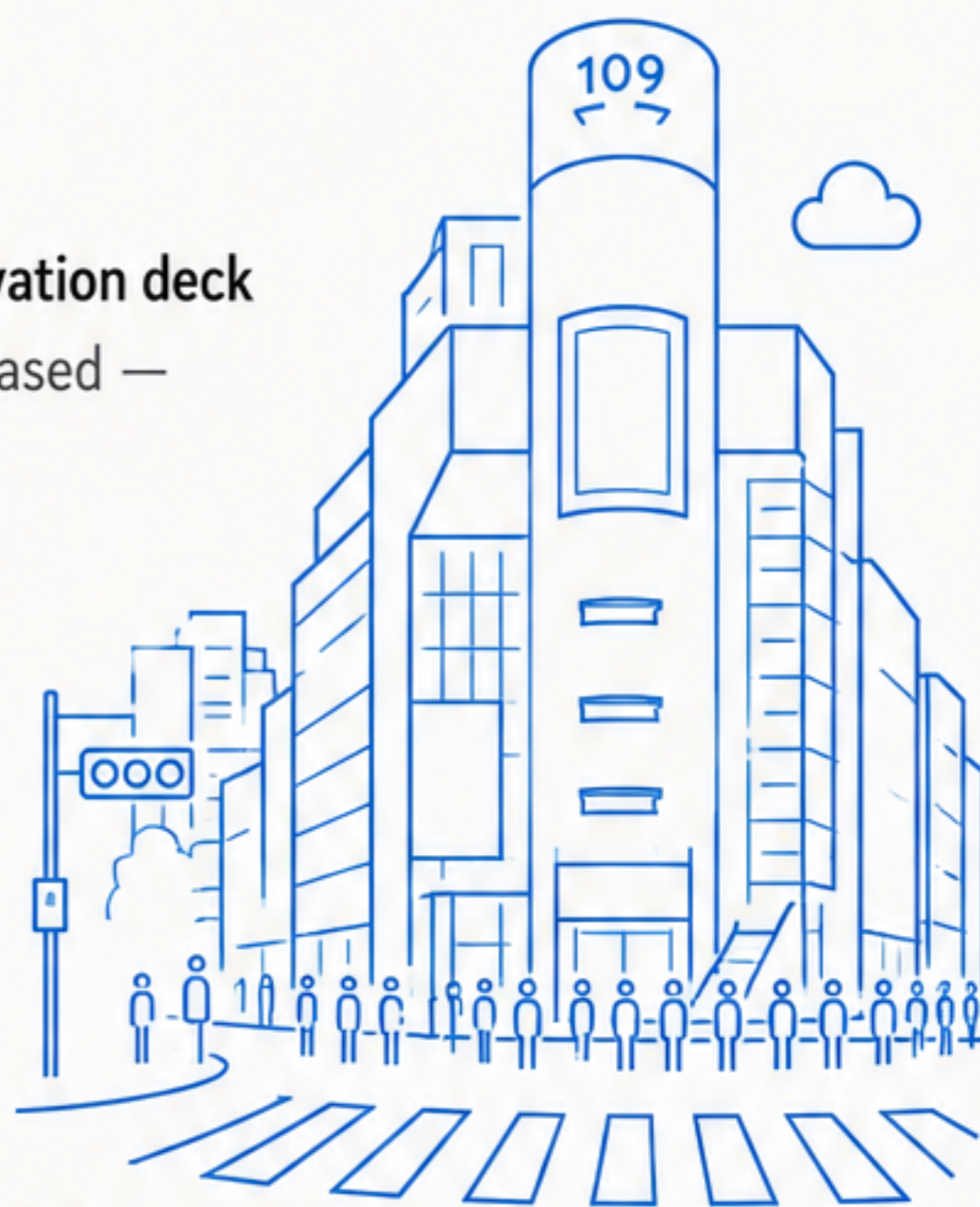
**Shibuya Stream**



**Miyashita Park**



**shopping at Scramble Square / Hikarie**



## EAT NEARBY

Nonbei Yokocho izakaya alley ・ ramen ・ department-store food halls (depachika) at Scramble Square & Hikarie ・ trendy cafes.



## GETTING AROUND

Shibuya Stn (JR Yamanote, Ginza, Hanzomon, Fukutoshin, Tokyu, Keio).  
For the crossing & Hachiko, use the **Hachiko Exit**.

